

Predict | Protect | Prevent

ARCON|PAM

Installation and Configuration on Redhat

Table of Contents

1	Introduction	3
1.1	Pre-requisites	3
1.2	Supported OS.....	3
1.3	Installation Procedure.....	3
1.4	Configuration Procedure	4

1 Introduction

ARCON Privilege Access Management (PAM) solution is a high level access security solution for managing privilege accounts in an enterprise. It is frequently used as an Information Security and Governance tool to help companies prevent data breaches through the use of privileged accounts and meets compliance regulations.

Privileged Access Management involves managing privileged individual identities, their authentication, authorization, and privileges/permissions within or across systems and enterprise boundaries with the goal of increasing security and productivity while optimizing the downtime, repetitive tasks & the cost.

It explains step-by-step instructions to help you install ARCON PAM on Redhat.

1.1 Pre-requisites

- Install Microsoft Visual C++ 2015 Redistributable (x64) on 64 bit Application Server.
- Install Microsoft Visual C++ 2015 Redistributable (x86) on 32 bit Application Server.


1.2 Supported OS

- Redhat 7.5 64 bit

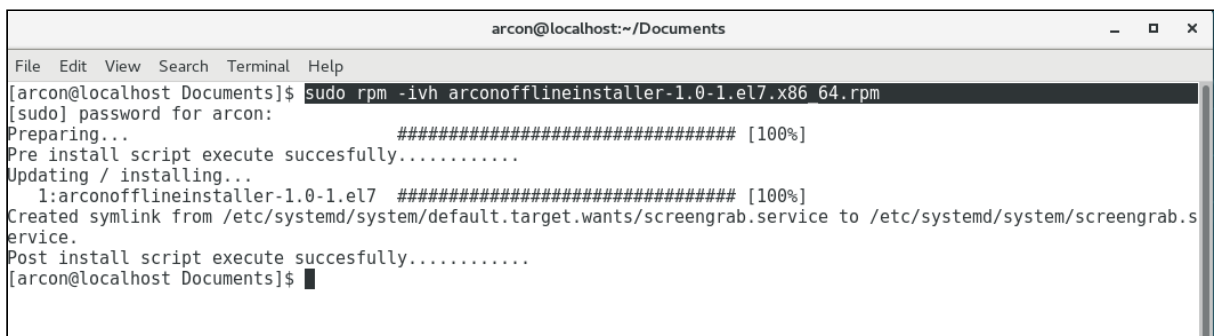
1.3 Installation Procedure

 The installation process shall start with Root User.

1. Open Terminal
2. Change Directory

 Change the Directory path, where `arconofflineinstaller-1.0-1.el7.x86_64.rpm` package is downloaded.


3. Execute command `sudo rpm -ivh arconofflineinstaller-1.0-1.el7.x86_64.rpm`.
4. Click **Enter**.
5. Enter your system password.
6. Click **Enter**.



```

arcon@localhost:~/Documents
File Edit View Search Terminal Help
[arcon@localhost Documents]$ sudo rpm -ivh arconofflineinstaller-1.0-1.el7.x86_64.rpm
[sudo] password for arcon:
Preparing... ##### [100%]
Pre install script execute successfully.....
Updating / installing...
 1:arconofflineinstaller-1.0-1.el7 ##### [100%]
Created symlink from /etc/systemd/system/default.target.wants/screengrab.service to /etc/systemd/system/screengrab.service.
Post install script execute successfully.....
[arcon@localhost Documents]$

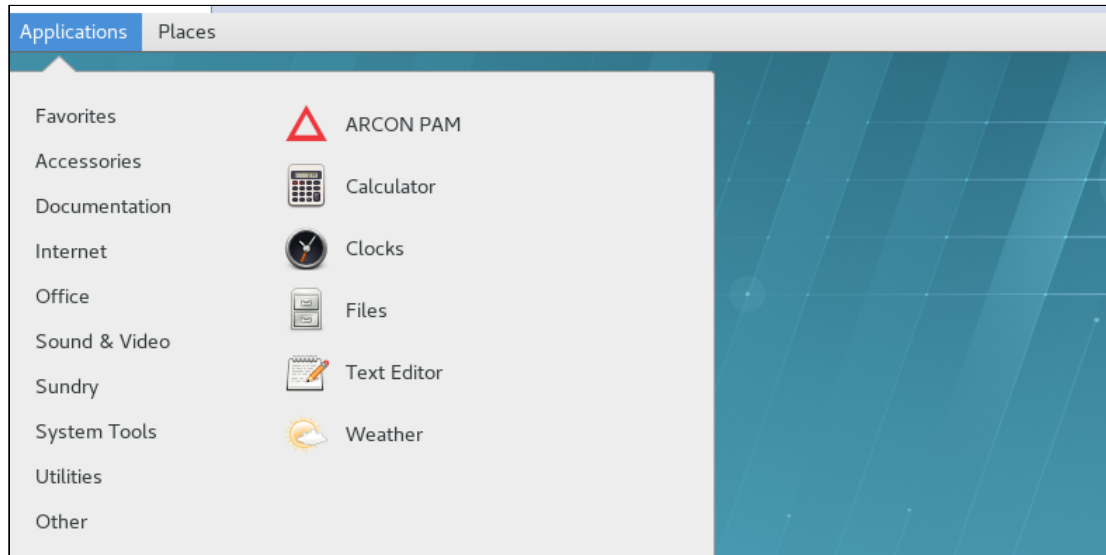
```

 Once ARCON PAM installation is successful, **restart** the system. You can now start using ARCON PAM application.

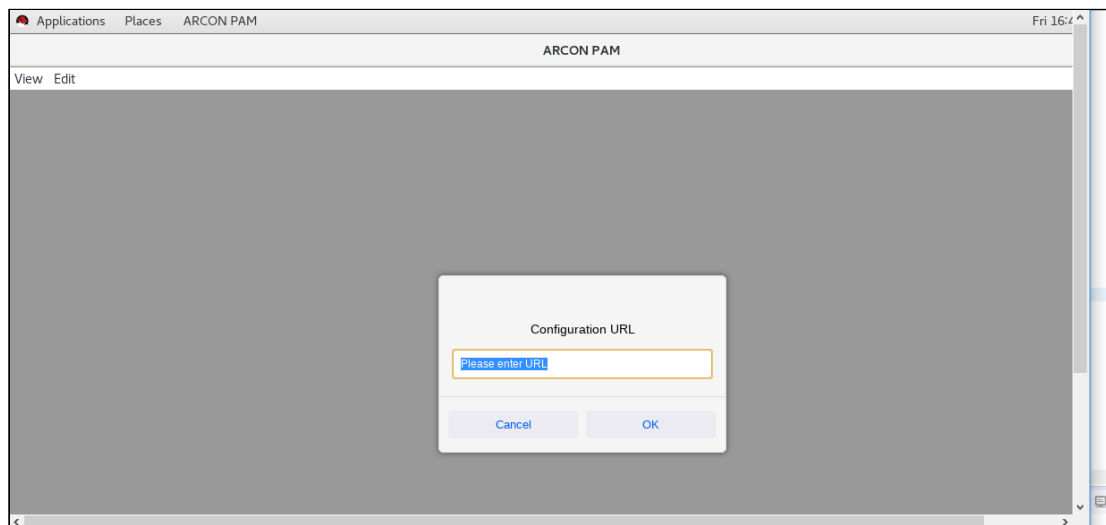
1.4 Configuration Procedure

The configuration steps followed to access ARCON PAM are as follows:

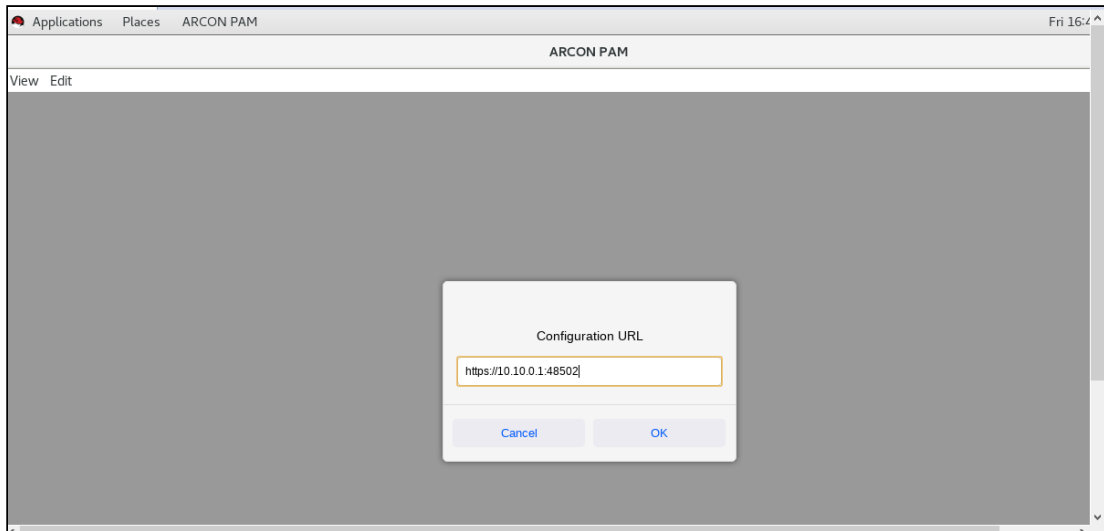
1. Click on the **Application** menu and search for the required application e.g. ARCON PAM.



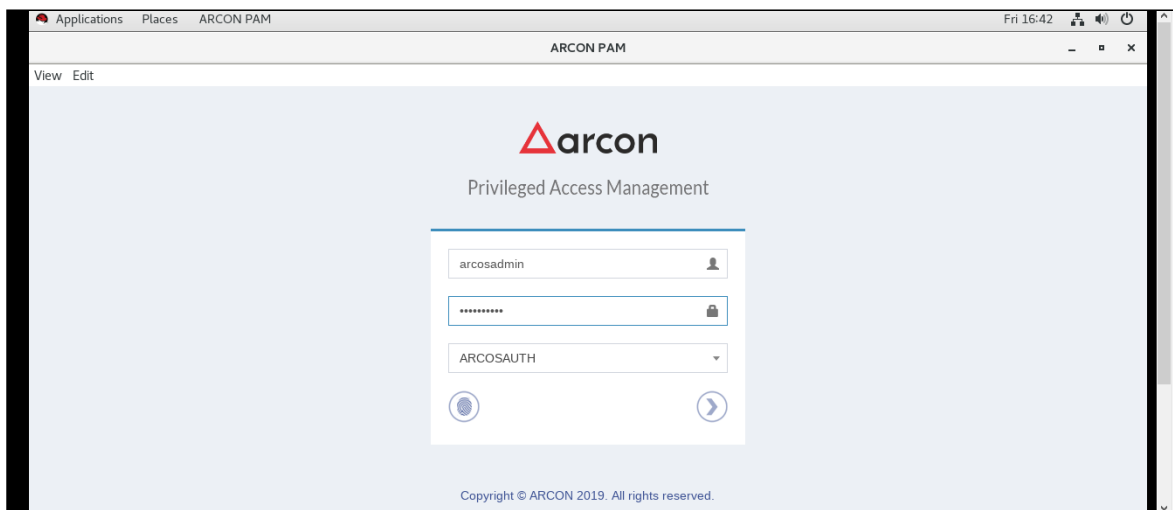
2. Double click on ARCON PAM application. The **Configuration URL** pop up screen is displayed.



3. Enter the **URL** in the **Configuration URL** textfield.




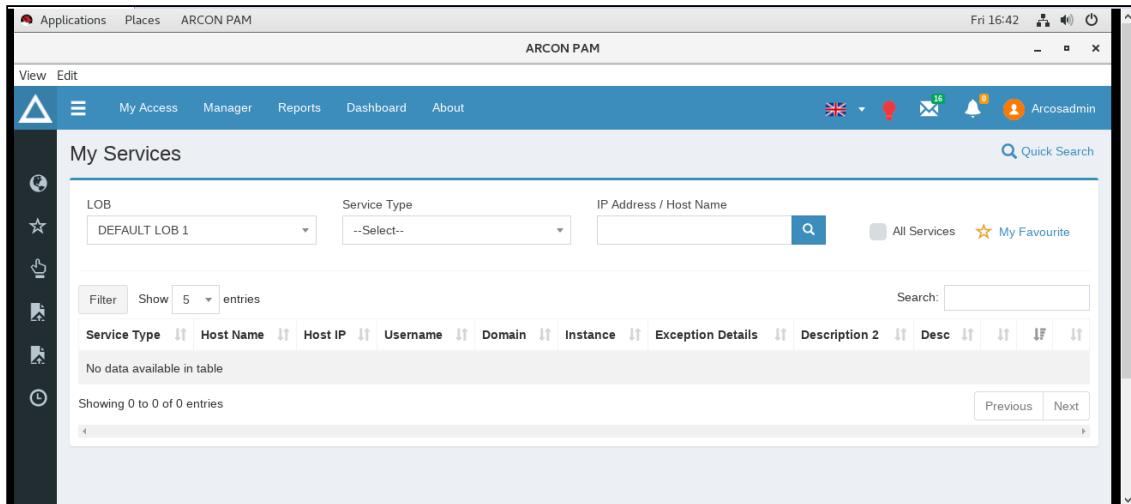
4. Click **OK**. The **ARCON PAM** Login screen is displayed.



5. The **ARCON PAM** login screen contains the following fields:

Field Name	Description
Username	Enter the username.
Password	Enter the password.
Domain	Select the domain from the drop down list.

6. Enter the credentials in the above fields and click the  button, viewed in the application. The **ARCON PAM Home** screen is displayed.



Privileged Access Management Suite



No part of this publication may be reproduced, stored in a retrieval system, or transmitted in any form or by any means such as electronic, mechanical, photocopying, recording, or otherwise without permission.